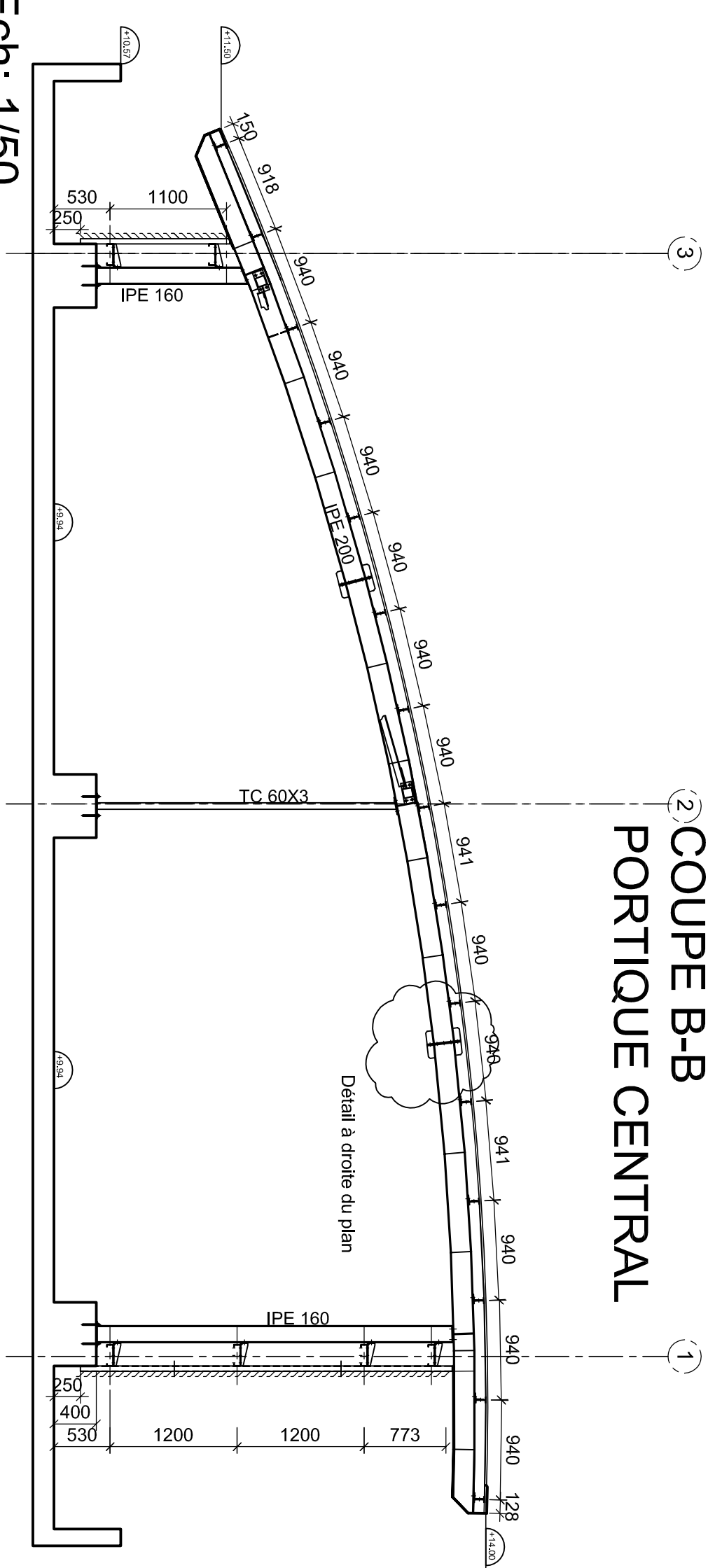
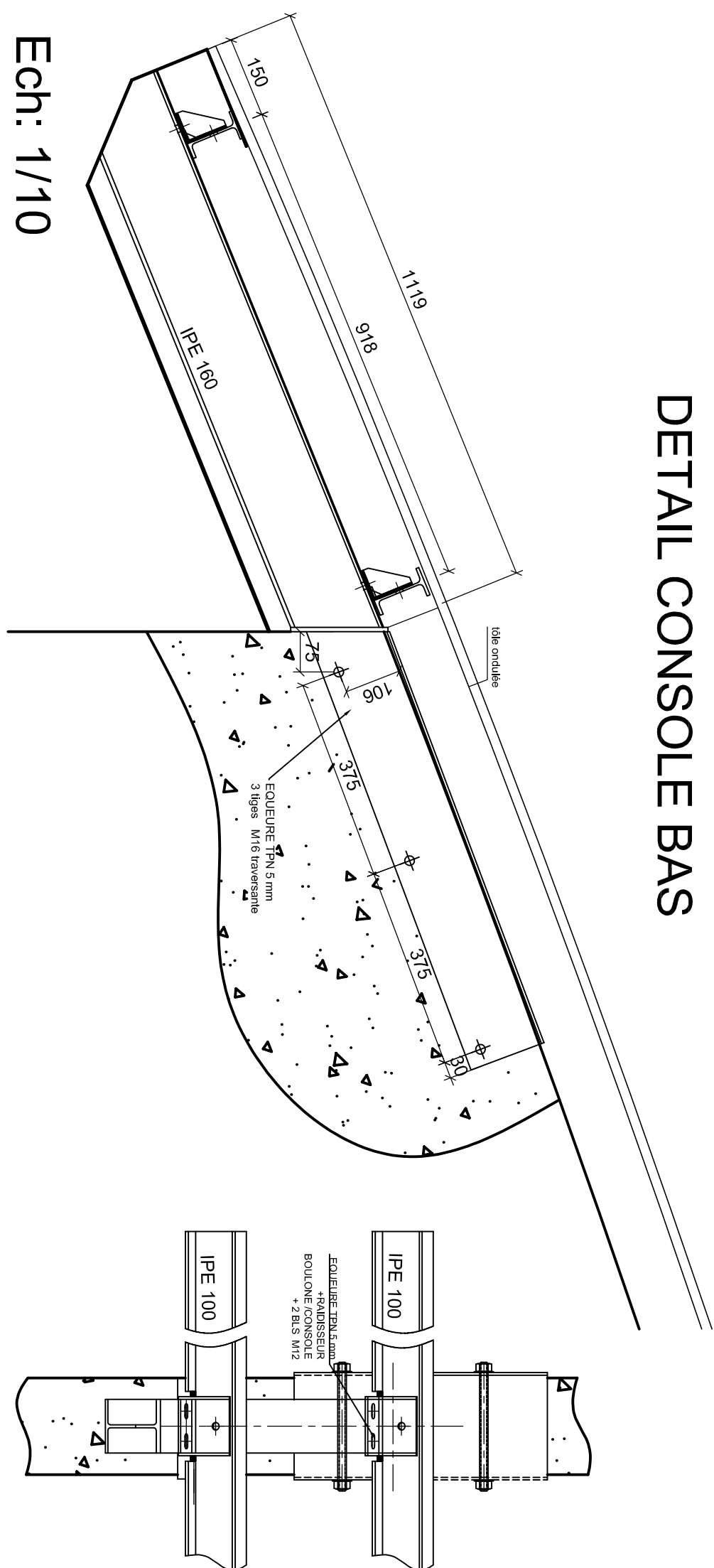


2 COUPE B-B
PORTIQUE CENTRAL



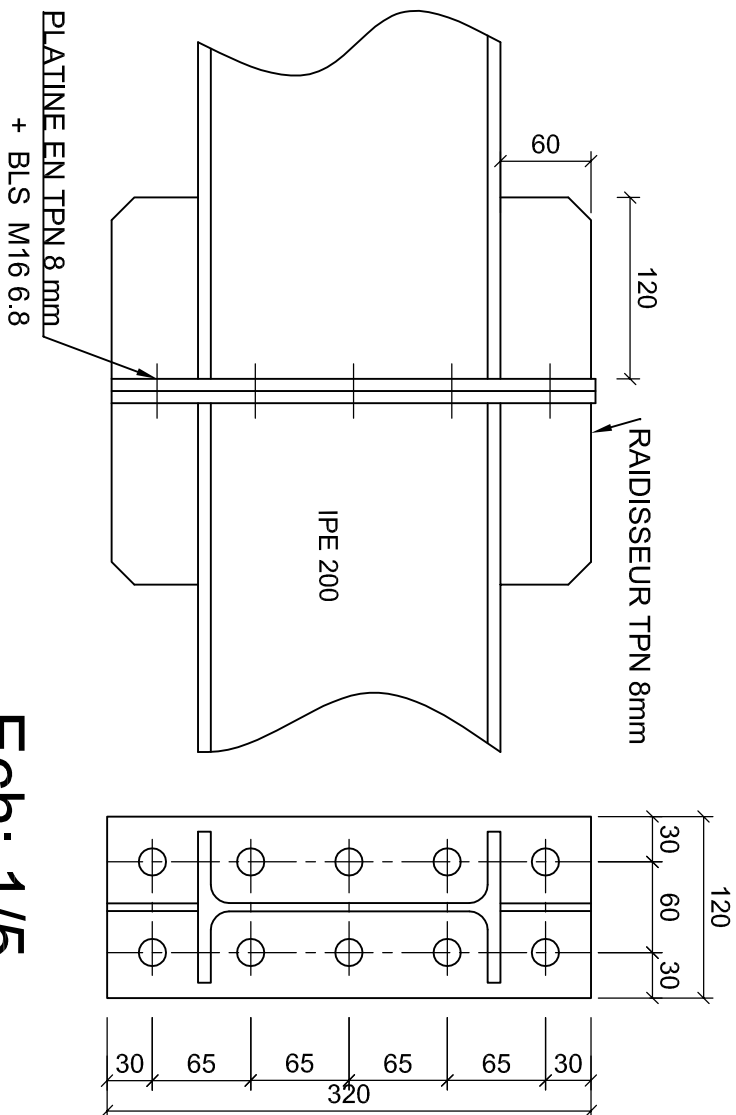
Ech: 1/50

DETAIL CONSOLE BAS



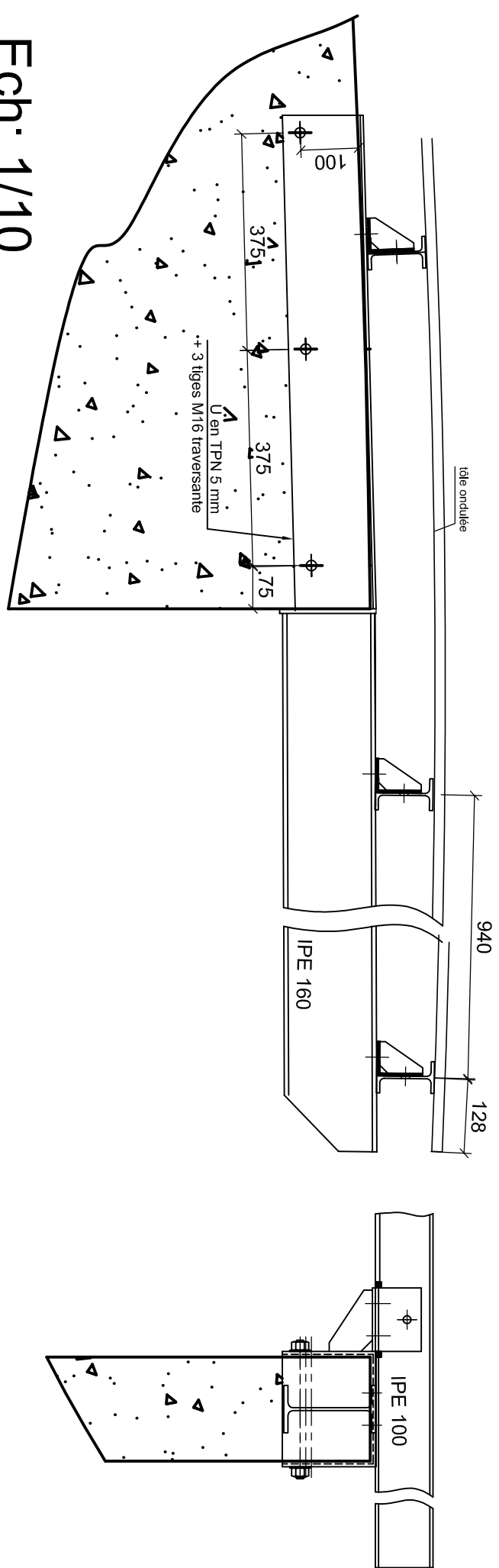
Ech: 1/10

ENCASTREMENT ARBA IPE 200



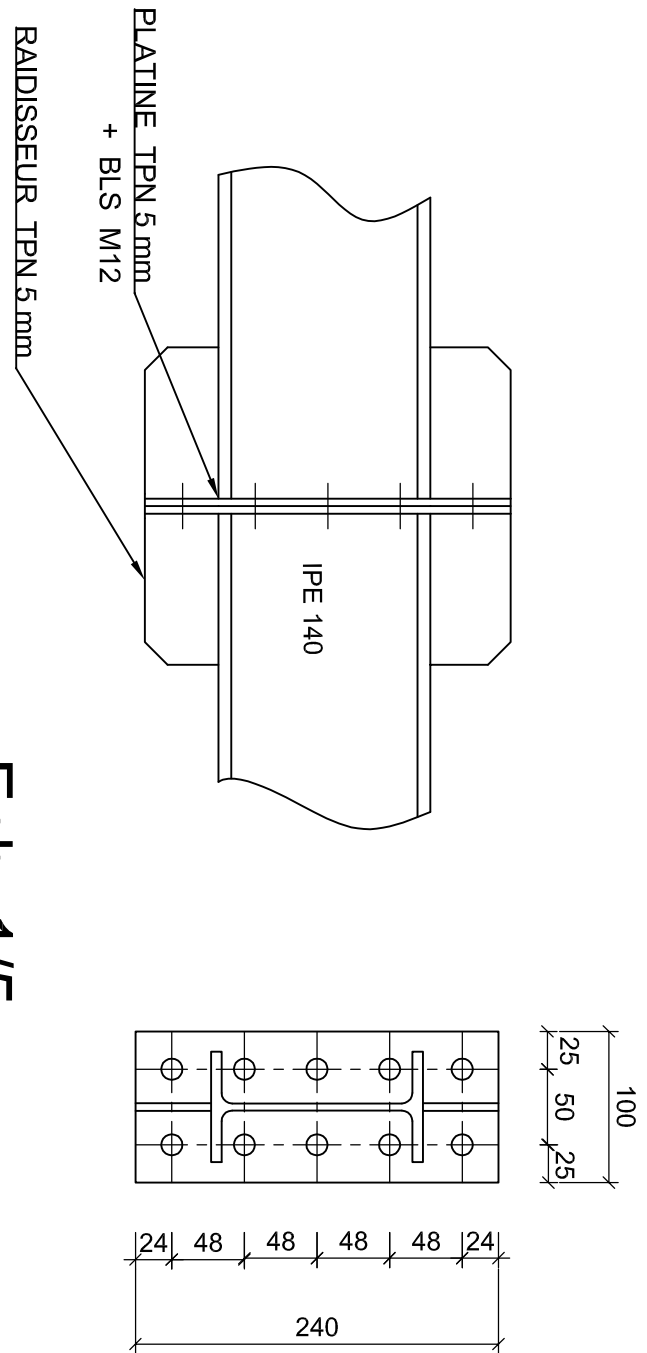
Ech: 1/5

DETAIL CONSOLE HAUT



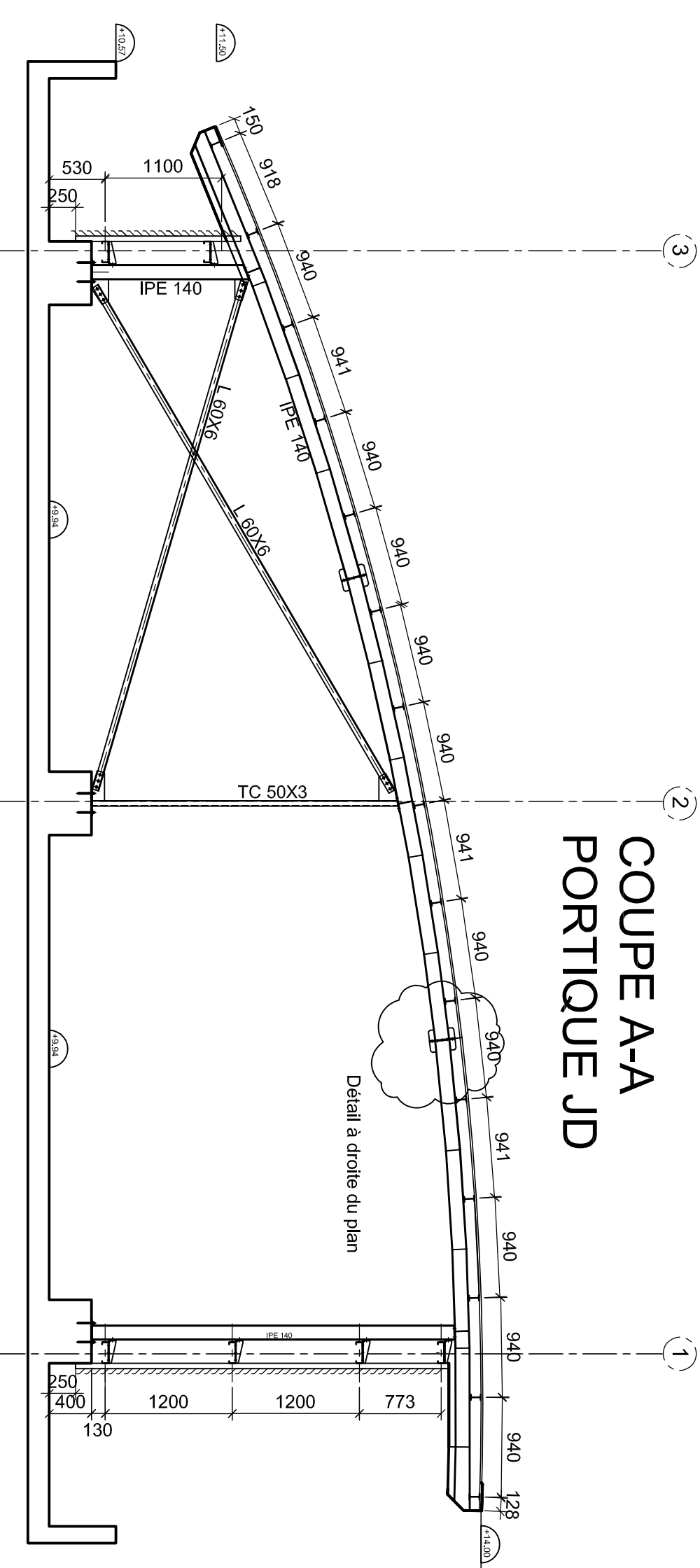
Ech: 1/10

ENCASTREMENT ARBA IPE 140



Ech: 1/5

2 COUPE A-A
PORTIQUE JD

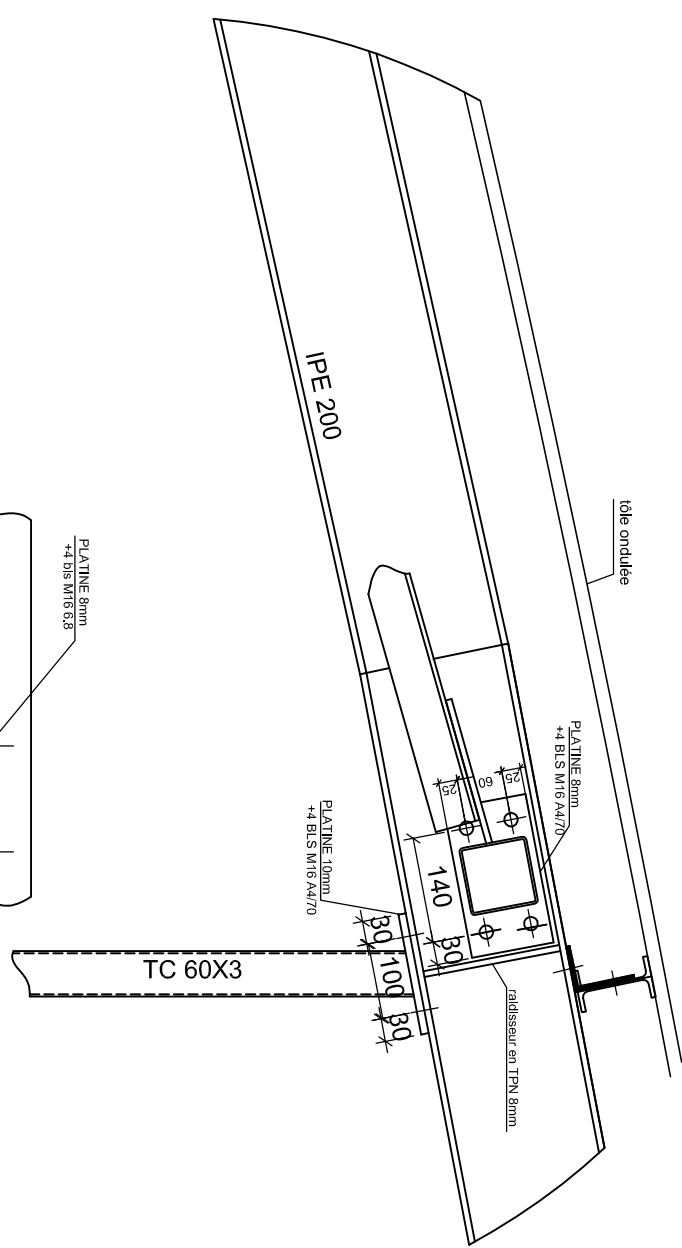


Ech: 1/10

Ech: 1/10

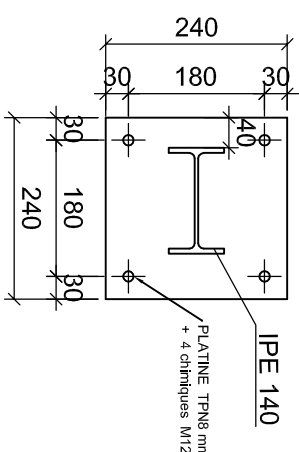
Ech: 1/10

LIAISON BUTON /ARBA IPE 200
ET LIAISON POTEAU TC 60x3

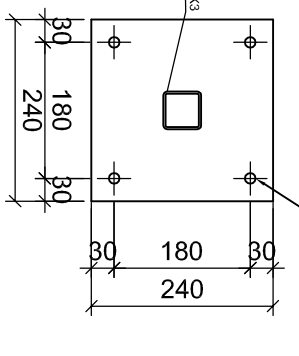


Ech: 1/10

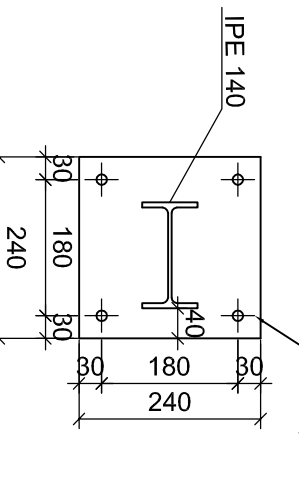
Ech: 1/50



Ech: 1/10

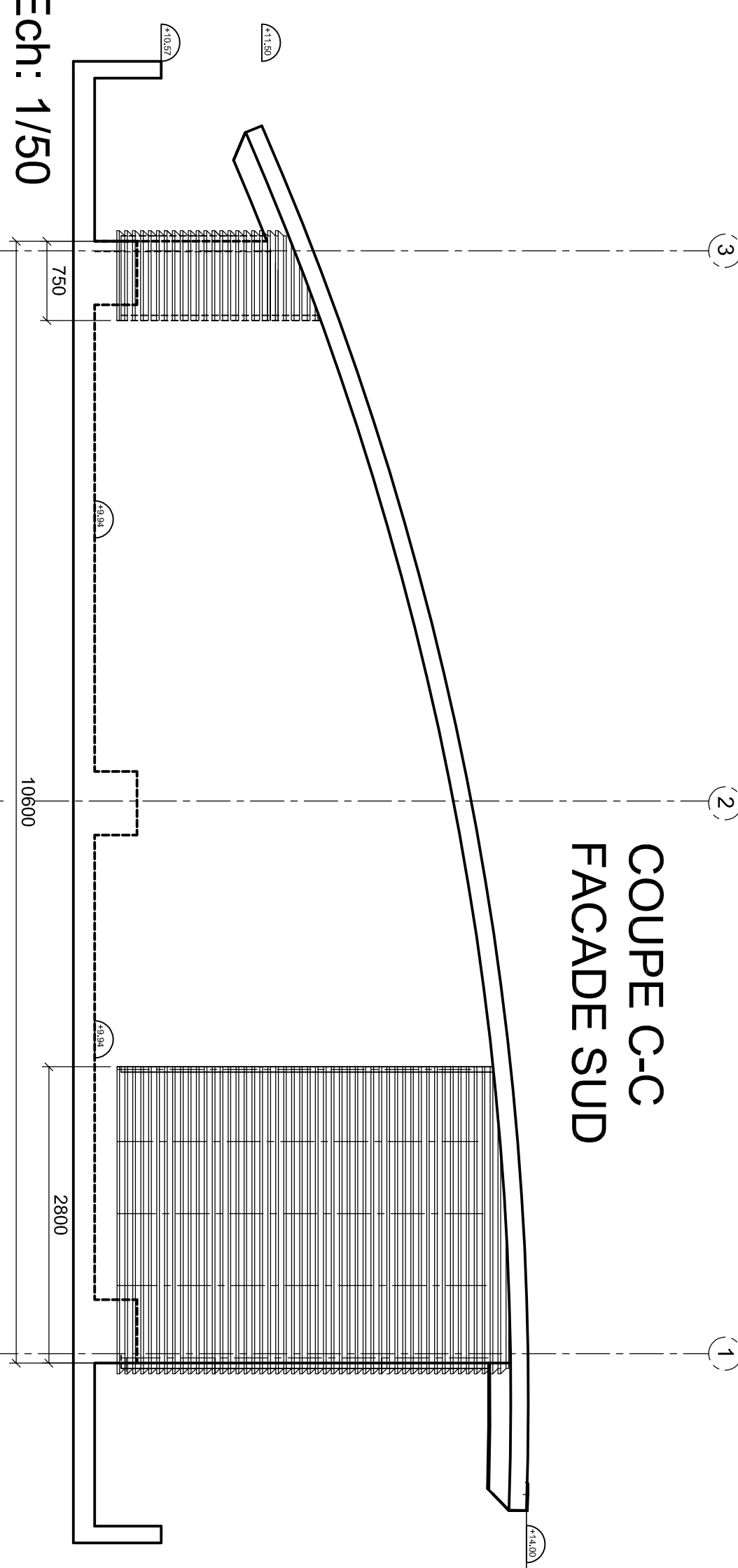


Ech: 1/10



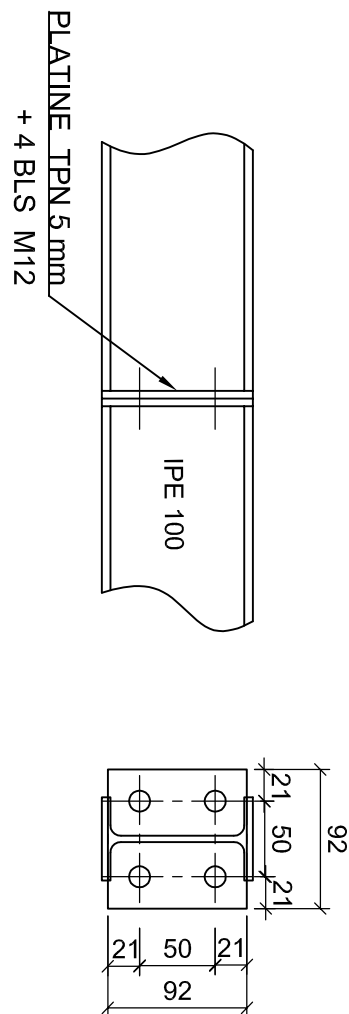
Ech: 1/10

2 COUPE C-C
FACADE SUD



Ech: 1/50

ENCASTREMENT /PANNE IPE 100



Ech: 1/5

DEPARTEMENT DE LA REUNION
COMMUNE DE SAINT PIERRE

R.S.M.A.R. QUARTIER SUACOT
Construction de 2 bâtiments hébergements
2ème tranche

Plan Charpente

Maitre d'Ouvrage :
Service Militaire Adapté

Bureau de contrôle :
-

Maitre d'oeuvre :
Direction des travaux infrastructure du RSMA-R

Entreprise charpente et couverture :
B&M STRUCTURE
PAE de la Mare
lot 9 - Atelier n°65
97438 Sainte-Marie

N°Plan : CH03 DOE Date : 28/02/12Ech : .

Indice	Date	Modification

B&M
STRUCTURE

B&M Structure
PAE de la Mare
lot 9 - Atelier n°65
97438 Sainte-Marie
Fax : 0262 / 97.60.66